



Acoustics
Solutions. Innovations. Quality.



Lost Ark Studio



Who We Are

Each year GIK Acoustics treats more than 5,000 rooms worldwide with acoustic panels, bass traps, and diffusors from our locations in the U.S. and Europe. We are the #1 choice for recording studios, listening rooms, home theaters, restaurants, churches, and live auditoriums. GIK Acoustics not only provides the largest selection of high quality, patented, eco-friendly products at affordable prices, but we provide clients with professional design assistance and friendly support staff to help achieve the best acoustically sounding space possible.

There's a difference between a GIK Acoustics product and all others on the market. We employ the highest **QUALITY** materials which translate to the highest quality products. Our exceptional **VALUE** means our customers do not over-buy or over-treat a room to get results. Customer satisfaction is our #1 priority and we have a **HELPFUL SUPPORT STAFF** to ensure clients get the best results from our products. We are firm believers in **INFORMATION** and our website is full of educational Articles, Videos, and the interactive Acoustics & Audiogeekery Blog. GIK Acoustics continues to develop **INNOVATIVE** methods, ideas, designs, and products to fill our clients' needs. And it's our commitment to use **ENVIRONMENTALLY SAFE** materials for all our products.



Free Advice

We take a holistic approach to helping our customers understand the acoustical issues in their space and then present a practical approach to addressing the issues. Our solutions are based on the science of acoustics and one of the key dynamics to our success lies in demystifying sound dynamics and room acoustics. We are firm believers in education and our website is full of helpful articles and videos. We pride ourselves on finding cost-effective solutions tailored precisely for each of our customers' needs.

GIK ACOUSTICS OFFERS FREE ACOUSTIC ADVICE FROM OUR STAFF OF TRAINED PROFESSIONALS WHO PROVIDE THE BEST RECOMMENDATIONS FOR YOUR ROOM. SIMPLY CLICK ON THE ACOUSTICAL ROOM ADVICE LINK ON OUR WEBSITE TO COMPLETE OUR HANDY ONLINE FORM.



Abbey Road
Institute



Red Barn Studio

Basics of Room Setup

As the music industry has changed, GIK has worked with professionals to improve and maximize small room acoustics. Getting great sound in this type of space can be a challenge; but thanks to a little math and a bit of acoustic treatments, GIK can make your room sound better.

Smaller spaces generally have problems with the lower end because bass frequencies are longer and more powerful than treble frequencies. Broadband acoustic treatments like bass traps can correct issues with the lower end, as well as the mid- or higher-end without making the room sound too dead.



There are four primary areas within a room to consider: First Reflection Points, Rear Sidewalls, Back Wall, and Corners.



All are important... there is not a particular order when it comes to treating a room. But it's worth repeating: There is no better impact on the sound in your space than proper acoustic treatments.



PRODUCTS: BEST SELLERS



While we take pride in all the products we offer, there are certain GIK treatments that provide reliable results for all types of rooms. Our company was founded on these products and our clients can't resist these best sellers.

GIK 242 Acoustic Panel

3.5" thick; three standard sizes:

24" x 48.25" • 24" x 24" • 12" x 48" (also customizable)

- Broadband absorption from 200Hz
- Built-in air gap increases low end absorption
- Ideal as a cloud on the ceiling



GIK 244 Bass Trap with FLEXRANGE TECHNOLOGY

5.25" thick; three standard sizes:

24.25" x 48.25" • 24" x 24" • 12" x 48" (also customizable)

- FlexRange RANGE LIMITER membrane absorbs low end but cuts off at 400Hz and above versus the broadband FULL RANGE option

GIK Monster Bass Trap with FLEXRANGE TECHNOLOGY

7" thick; three standard sizes:

24.25" x 48.5" • 24" x 24" • 12" x 48" (also customizable)

- Effective down to 63Hz exceed 24 sabins at 80Hz
- RANGE LIMITER membrane available



GIK Tri-Trap Corner Bass Trap®

- Designed to fit any corner
- Measures 23.5" x 16.5" x 16.5" x 47" (also customizable)
- Designed to absorb at 50Hz and below
- Freestanding with a solid core that can support up to 50lbs
- RANGE LIMITER membrane available
- Professionally lab tested

OPTION:

Designed with a mathematical sequence of slots to create one-dimensional scattering, the built-in **SCATTER PLATE** fits between the fabric and the absorption materials.



PRODUCTS: SOUND ABSORBERS

The purpose of Absorption Products is to reduce, but not entirely eliminate, resonance within the room.

GIK ArtPanel



- Employs dye sublimation to transfer YOUR image onto fabric
- Images are acoustically transparent and permanent – will not peel or fade
- Starting at 2" thickness
- Custom-sized to fit your space or artwork. Ideal for logos!
- Perfect option for restaurants, homes, and recording studios
- Image is printed over the entire panel and wraps around edges.

SPOT PANEL

- Thin 2" profile
- Three standard sizes: 24" x 48" • 24" x 24" • 12" x 48"
- Customizable up to 8' x 4'
- Can be arranged in stylish patterns
- Great for controlling ambient noise
- Easy to mount on walls with sawtooth picture hanger (included)



GIK Soffit Bass Trap®



- Measures 17" x 46.5" x 17"
- Effectively designed to absorb at 40Hz and below
- Multiple orientation options – floor-to-wall, ceiling-to-wall and wall-to-wall corners
- Can be custom sized for complete corner coverage
- Freestanding or mountable options available
- Professionally lab tested

GIK Scopus Tuned Membrane Bass Trap

- Designed to tackle specific low frequency problems
- Tuned to effectively work in the desired range only
- Leaves mid- and high-end frequencies intact
- Center frequencies are 40Hz, 70Hz, and 100Hz.
- Custom tunings available
- Professionally lab tested



PRODUCTS: DIFFUSION

Diffusors work on the principle of modifying the location and movement of sound in the space in relation to itself and other frequencies. A proper diffusor impacts sound waves in 3 domains – time, direction, and intensity.



GIK Q7d Diffusor

- All wood, 7-root well diffusor
- Begins scattering at approx 350Hz and offers effective and even diffusion up through 3kHz
- For rear wall, reflection points, or behind dipole / bipole speakers
- 19" x 46" x 6" thick
- Available in blonde, brown, or black veneer or unstained for painting or staining to match any décor

GIK GridFusor®

- Thirteen-root EPS (expanded polystyrene) diffusor measures 24" x 24" x 6" thick
- Designed as drop-in replacement for any standard 2' x 2' ceiling tile
- Easily mounted on walls using adhesive or double-sided tape
- Excellent diffusion from 600Hz to 5,000 Hz
- Paintable to blend with any décor or color scheme



GIK Evolution Polyfusor®

- Measures 24" x 48" and is 5.25" at widest point
- Provides great mix of absorption and diffusion capabilities
- Curved panel that smoothly transitions as a bass trap from 80Hz, to upper-bass/lower-mid scattering device, to diffusor. Starts diffusing at 600Hz.
- Can be wall mounted, freestanding, or stacked
- Available with black, white or wood caps

Gotham N23 5" Quadratic Skyline Diffusor

- 23-root calculated sequence provides true, even diffusion from 1250hz to 9500hz with scattering down to 650hz
- Made of blonde MDF which looks great natural or can be painted to match any decor

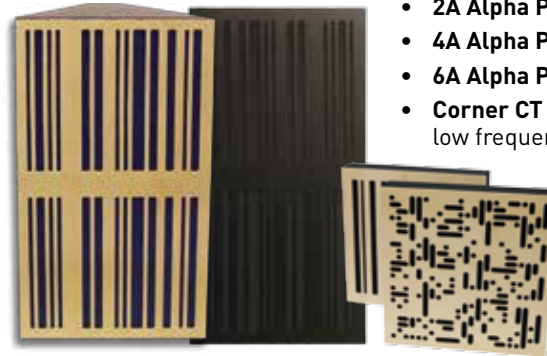


PRODUCTS: ALPHA SERIES



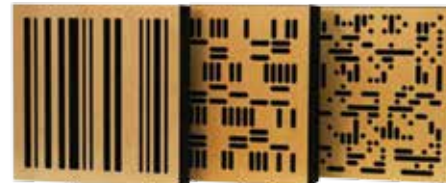
Changing the face of Acoustic Panels and Bass Traps.

CHOOSE THE LEVEL OF ABSORPTION:



- **2A Alpha Panel** is 2" thick
- **4A Alpha Panel** is 4" thick
- **6A Alpha Panel** is 6" thick
- **Corner CT Alpha Bass Trap** is designed to absorb low frequencies that build up in corners

ALPHA SERIES PLATES ARE AVAILABLE IN THREE SCATTERING / DIFFUSION SEQUENCES



1D Alpha Plate 2D(b) Alpha Plate 2D(a) Alpha Plate

- **One-Dimensional**
the original 1D design
- **Two-Dimensional**
two patterns to choose from
- 2D (a) has a pattern of dots and dashes
- 2D (b) has a pattern of dashes

Plates available in three finishes: blonde wood veneer, black acrylic, or white acrylic

ALPHA SERIES PANELS ARE AVAILABLE IN TWO STANDARD SIZES

- **Square** – 23.75" x 23.75"
- **Rectangle** – 23.75" x 47.75"
Optional freestanding supports available on rectangular (23.75" x 47.75") Alpha Panel. When freestanding, the Alpha Panel can change the acoustics of a room by simply turning the panel to face front or back. Position the Alpha plate outward for diffusion or turn the fabric side outward for broadband absorption.



PRODUCTS: IMPRESSION SERIES



IMPRESSION
series

REFLECT YOUR STYLE

CHOOSE FROM 5 BEAUTIFUL PATTERNS:



3D Cubes



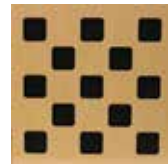
Mod Geometric



Gatsby Arches



Bubbles



Checkerboard

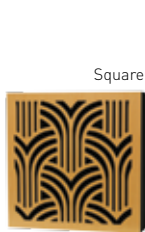
In three different plate finishes: blonde wood veneer, white rigid vinyl, black rigid vinyl

CHOOSE THE SIZE:

Square (23.75" x 23.75")

Narrow (11.75" x 47.75")

Rectangle (23.75" x 47.75")



Square

Narrow



Rectangle



CHOOSE THE LEVEL OF ABSORPTION:

2" thick, 4" thick, or 6" thick panels

The depth or thickness of the panels depends on the amount of low-frequency absorption desired. The thickness of the panel dictates the lower limit of absorption. As thickness increases, the amount of low frequency absorption increases as well. The thicker the panel, the greater the absorption.



- Designed to reduce noise and sound reverberation without over dampening
- Sturdy construction with wood frame and environmentally-friendly materials
- All sizes can be wall mounted with included sawtooth hangers. No glue or destructive adhesive when installing.
- Optional freestanding supports available on Rectangle (23.75" x 47.75") panels

PRODUCTS: VOCAL BOOTHS / GOBOS

A gobo is a movable acoustic isolation panel ideal for any room where wall mounted panels cannot be used or for rooms with multiple purposes.



GIK FreeStand Acoustic Panel & GIK FreeStand Bass Trap

- Covers 5 feet of vertical wall space
- Available as a 2" Acoustic Panel
- Available as a 4" Bass Trap
- Provides absorption in front of windows and doors
- Stainless steel supports
- Easy to place wherever needed and store when not in use

Screen Panel

- Hinged, movable, free standing acoustic isolation panel
- Use unfolded as a vocal booth, around a drum kit or guitar amp, or at reflection points
- Use folded to straddle corners as a bass trap
- 32" wide x 72" high x 3" thick
- Available in custom sizes
- No mounting hardware or stands required



The PIB (Portable Isolation Booth)

- Isolates a vocalist or sound source
- Unfolded it acts as a vocal booth; and unlike a mic shield it expands to 6'6" tall x 3'7" wide
- Collapsed it can be used as an isolation screen around instruments
- Thin, rigid plate with stylish cutouts provides absorption while being semi-reflective
- Effectively absorbs down to 150Hz, yielding improved clarity.





GIK ACOUSTICS MAKES YOUR ROOM SOUND BETTER.

1

Choose from our full line of Absorption, Bass Trapping, and Diffusion products. Our design staff is available to provide free acoustic advice and solutions.

2

Select from our standard sizes, depths, patterns, colors and fabrics. All GIK products are made-to-order so custom sizes and upgrade finishes are available.

3

Complete your order with our secure online checkout or through a helpful associate. Products are shipped direct to you and installation is a snap!

www.gikacoustics.com | www.gikacoustics.co.uk
888 - 986 - 2789 | + 44 (0) 20 3815 8608

